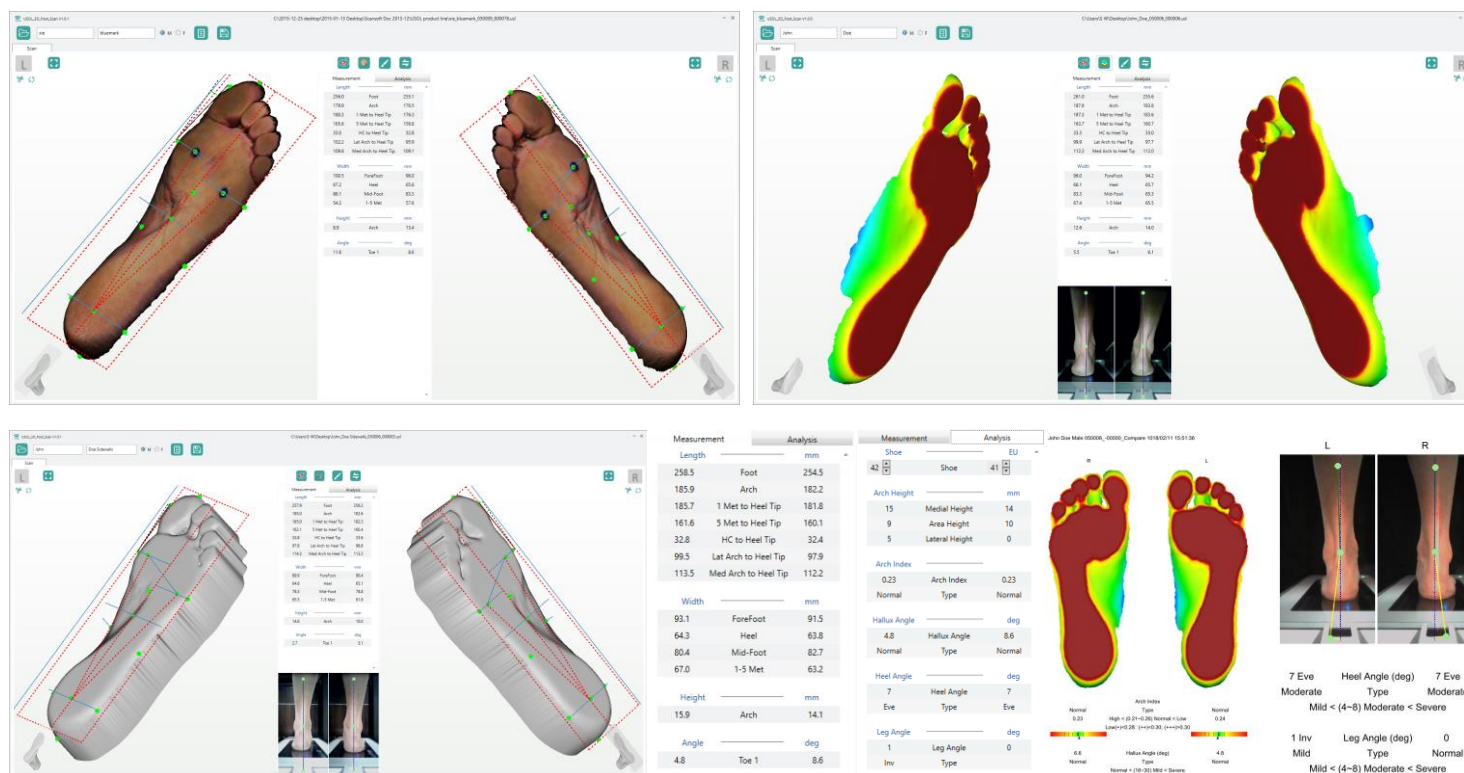


Small and light. Reliable after years of field use worldwide.  
Fast true 3D laser scan. Auto landmark, measurement, and analysis.  
Custom shoes and orthotic insoles fabrication for foot clinics.  
Prefab shoes and orthotic insoles selection for retail stores.

**USOL/USOL-DUO vs. LSR/LSR-DUO: Smaller/Lighter/Faster/Prettier**



**USOL/USOL-DUO Software UI more elegant**



If 2 round blue markers are placed on 1<sup>st</sup> Met and 5<sup>th</sup> Met before scanning, USOL software identifies the two markers.

**USOL/USOL-DUO Features (New)**

- More measurement metrics
- More accurate Arch Index
- More elaborate PDF report
- Direct to FTP sending file after Save
- Double-Scan mode: Relaxed/Corrected for Before/After compare
- Scan Modes allow exposure value change
- Customize PDF report format
- Automatically identify 2 met points if blue markers are placed

- Much more reliable hardware design
- Much easier repair/replacement of parts (on-site)
- Foldable heel camera with laser on USOL
- Heel camera without laser on USOL-DUO
- Front vertical toe laser help align foot/ankle
- Supports normal scan speed with low-cost CPU
- WeChat/Facebook integration (to be finished...)

**USOL/USOL-DUO Features (carried over from LSR/LSR-DUO)**

- Auto analysis for arch type, hallux, and heel (manual)
- Mark landmarks on foot then drag points to match
- Foot report with manual annotations
- Export to STL/WRL, JPG/PNG, PDF report, CSV data files
- FTP send order to orthotic insole/shoe fabrication
- Change interface language to your local language
- Customize software logo, sell your own brand
- Customize RX form for custom shoe/insole
- For programmers: CMD/TCP call scanner to receive data-integration into your own CAD software and database
- Encrypt scanners to lock files
- Custom top plate and side panel design

## Comparison

	USOL(New)	LSR	USOL-DUO(New)	LSR-DUO
Foot/Foam Box/Plaster Cast	Yes/Yes/Yes	Yes/Yes/Yes	Yes/Yes/Yes	Yes/No/No
Foot: Non/Full/Semi-Weight	Yes/Yes/Yes			
Indoor Lighting Conditions	Yes, no darkroom or shielding required. But should avoid direct sunlight.			
3D Accuracy	Clean 3D Mesh. +/-1.0mm. USOL/USOL-DUO has better 3D resolution.			
3D output file STL/WRL	Yes/Yes. WRL supports color texture on 3D file.			
Color Texture (Round-Trip)	Yes. A unique feature not found on other 3D foot scanners.			
Heel Camera/Heel Laser/Toe Laser	Yes/Yes/Yes	Yes/Yes/No	Yes/No/Yes	No/No/No
Size (mm) / Weight(Kg)	490*230*69 / 4.7	600*265*89 / 7.0	490*440*69 / 7.7	600*515*8.9 / 11.0
Scan Volume (mm)	330*140*80	350*140*70	330*140*80 X2	350*140*70 X2
Load Capacity	180 Kg			
Minimum CPU				
---Normal Speed Scan	Atom Z8350 (2.9 sec)	I5-6200U (2.9 sec)	Atom Z8350 (2.9 sec)	I5-6200U (2.9 sec)
---High Speed Scan	I5-6200U (1.9 sec)	No Support	I5-6200U (2.2 sec)	No Support
Minimum RAM	4G	4G	4G	4G
USB Port 2.0 or 3.0	Yes	Yes	Yes	Yes
Windows 7/8/10	No/No/Yes. Win10 only	Yes/Yes/Yes	No/No/Yes. Win10 only	Yes/Yes/Yes
Power Supply (adapter)	100~240V 50/60HZ AC to DC 12V/3.0A. Worldwide compatible. Major country plug types are provided.			
Warranty (Limited)	1 Year (per warranty statement)			

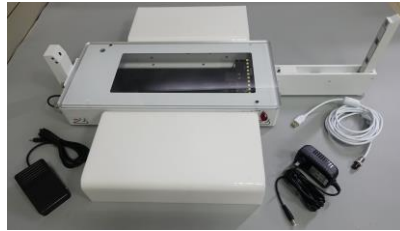
## USOL/USOL-DUO Configurations

**USOL Standard:** Scanner, Power Adapter, USB Cable (White), Foot Switch, Heel Camera (folding with laser). **Same as LSR standard config.**

**USOL Floor:** USOL Standard + Toe Laser, Side Steps (Pair).



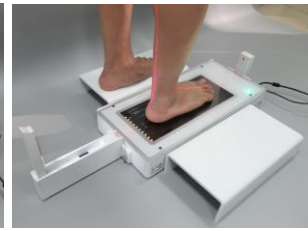
USOL Standard



USOL Floor



USOL Floor



USOL Floor

**USOL Vertical:** USOL Standard + Toe Laser, Folding Frame (with wheels) and VESA Bracket.



USOL Vertical:

Folding Frame (wheels) and VESA Bracket  
 Mounting position for supine or prone  
 Height adjustable 500-1000mm, chair to recliner  
 Heel Camera records heel position  
 Heel and Toe laser help to control foot posture

**USOL-DUO Standard:** Scanner, Power Adapter, USB Cable (White), Foot Switch. **Same as LSR-DUO standard config.**

**USOL-DUO Floor:** USOL-DUO Standard + Toe Laser, Heel camera (no laser).



USOL-DUO Standard



USOL-DUO Floor



USOL-DUO Floor



USOL-DUO Floor